



Environment and Sustainability Fuze HR Solutions Inc.



Our Vision:

At Fuze HR, we understand the important role we play in protecting and improving the natural environment. The workplace is an area where some of these improvements can take place. As such, our Environment and Sustainable Development Policy for 2022 reflects our working environment and is in accordance with the United Nations Global Compact, and the UN Sustainable Development Goals. We strive to continuously improve the impact of our business, on our planet.

“Being greener at work helps cut greenhouse gas emissions and reduces the negative environmental impact of our work.”

Our Approach:

Our approach to the Environment and Sustainability is guided by our commitments to the following principles: leadership, inclusivity, transparency, integrity, and continuous improvement.

Our Plan:

Our Environment and Sustainability Policy focuses on the SDG’s relevant to our industry, SDG 9 Industry, Innovation and Infrastructure, SDG 12 Responsible Consumption and Production and SDG 13 Climate Action.

Our Initiatives:

The Workplace Environment Committee

Fuze HR Solutions has created the Workplace Environment Committee to deal with environmental issues in our workplace. Their primary goal is to look at ways to improve the environmental record our workplace.

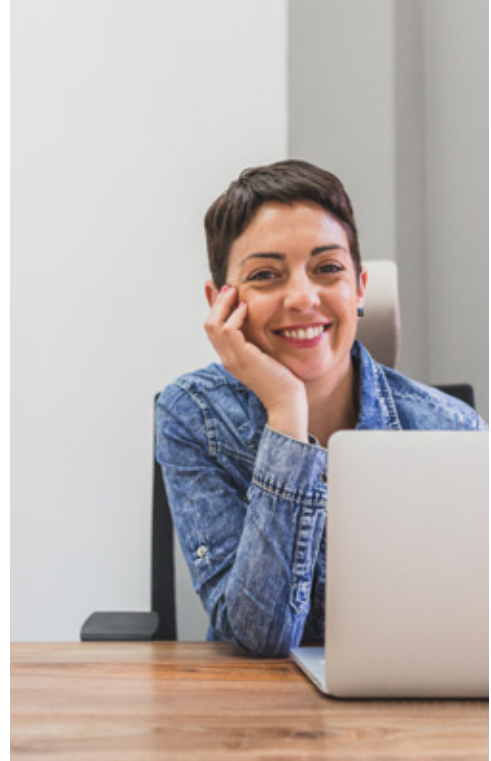
Our committee consists of:

- Chair of the Workplace Environment Committee: Ms. Maria Rodriguez
- Committee Members: Ms. Cheryl Botelho and Ms. Brittney Smith-Pierre

How Does it Work?

When they meet yearly, the Workplace Environment committee identifies areas at work that need fixing. Area's they have explored include but are not limited to:

- Workplace recycling and composting
- Conservation (energy, water, and all workplace materials)
- Greener transportation options and strategies for workers
- Greener workplace cleaning products and practices
- Greener vehicles, equipment, and materials
- Greener meeting practices
- Climate change policy and greenhouse gas reduction strategies



At Fuze HR Solutions, our Workplace Environment Committee performs yearly audits using the CUPE ECO AUDIT.

<https://cupe.ca/cupe-eco-audit-0>

Fuze HR Solutions Recycling Program

Our Recycling Program is administered by a third-party company, who collect and distribute our recyclables to the appropriate facilities and locations.

Organizations We Belong To:

RCEN – Canadian Environmental Network

